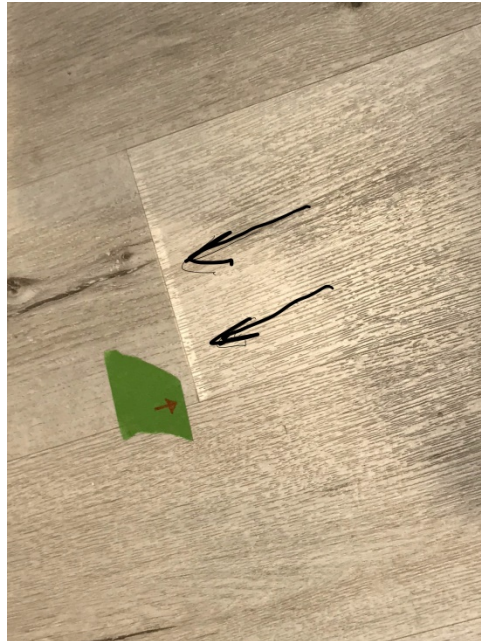
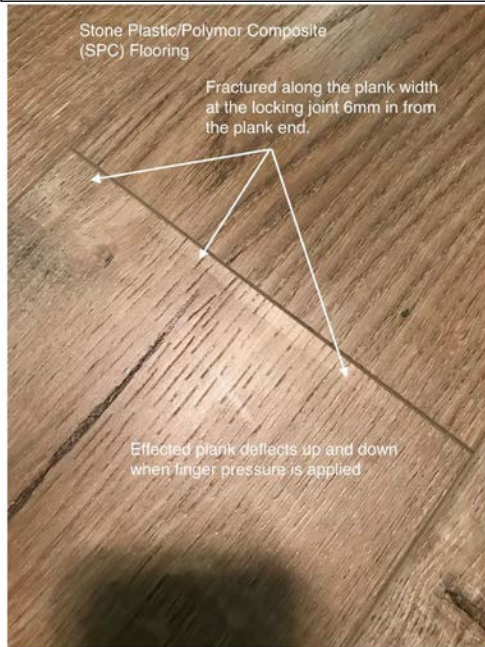


INSTALLERS BEWARE!



Installers beware! Stone Plastic/Polymer Composite (SPC) flooring is simultaneously strong and fragile and not as forgiving as LVT or Laminate during installation. While SPC flooring comes with durability benefits it also presents challenges that installers should consider when planning an installation.

Extra care when engaging the locking joint, understanding its weaknesses and how to tap it together will make the difference between a satisfied client and just another claim.

The tell-tale ski jump (in this photo) at the butt end of multiple installed boards indicates broken joints, usually associated with incorrect handling or excessive mallet impact. SPC joints are thin and brittle and if installed without the necessary care and attention such as use of a tapping block to spread the load of mallet impacts, also the correct disengagement method for removal and re-installation of planks, then micro-fracturing of the end joint can easily occur. Once this happens the issue may be obvious at time of installation or may take months to develop as fractures worsen with use.

For this reason, installers switching between LVT or laminate and SPC installation work should take time understand the locking joint, modify installation techniques and always review manufacturer installation guidelines to avoid the problems. www.nfca.ca #flooring #renovations #construction #vinylflooring #spcflooring

