

# NEXA HDP

High Definition Porcelain®

Color Body Porcelain Floor and Wall Tile

Microban®  
antimicrobial product protection

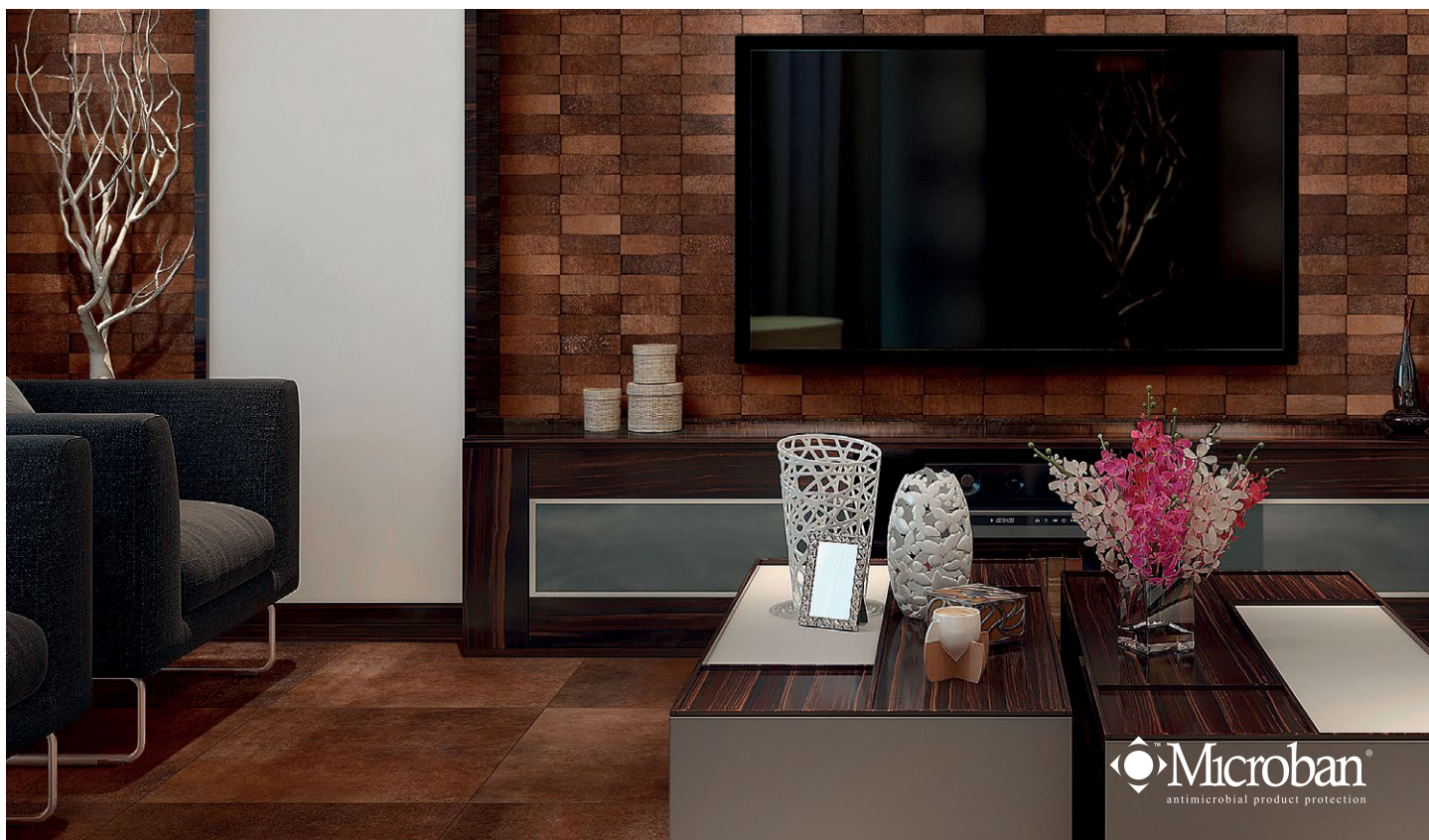


floridatile



# NEXA HDP

BY floridatile



Shown: **34895 24x24** Copper, **34895/M3D2x6** Copper 3D Mosaic (wall only)

With the rugged yet refined patina of weathered metal, Nexa<sup>HDP</sup> is the newest generation of metallic inspired, color body glazed porcelain tiles by Florida Tile. Urban and industrial in its feel, Nexa<sup>HDP</sup> is perfectly in sync with current architectural trends and delivers striking design impact. The interplay of surface, color and a high-low effect top glaze application creates a distinctive metallic effect with a high degree of shade variation. Whether your design intent is industrial-edge or eco-chic, Nexa<sup>HDP</sup> allows you to easily create stunning spaces using warm, varied hues of aged Copper; deep saturated Iron grays punctuated with layers of industrial rust; or the Sterling tones of old pewter and ash.

Three large-format sizes: 12x24, 24x24 and 18x36 come with a flat punch and rectified edges that allow for tight, nearly seamless installations. A 3x12 bullnose, a modern 12x12 offset stack mesh-mounted mosaic and a unique 12x12 architectural 3D mosaic (for walls only) are offered in all three colors providing endless creative options.

As part of Florida Tile's newest innovation in product development, the Nexa<sup>HDP</sup> collection incorporates Microban® antimicrobial technology, an amazing tool in the hands of architects and designers looking to develop exceptional environments with high performance in regards to hygiene and ease of maintenance. The eco-friendly Microban® treatment works continuously, inhibiting the growth of bacteria, improving visible cleanliness, and reducing odors for the life of the tile.

Manufactured using proprietary HDP—High Definition Porcelain® printing technology, Nexa<sup>HDP</sup> is appropriate for all applications in both residential and commercial settings. It is entirely made in the USA in our Green Squared® certified Advanced Manufacturing Center in Lawrenceburg, KY, of 40% pre-consumer recycled content, meets the DCOF AcuTest requirements to be installed in wet areas and is GREENGUARD® and Porcelain Tile certified.

Shown on Cover: **34819 18x36** Iron

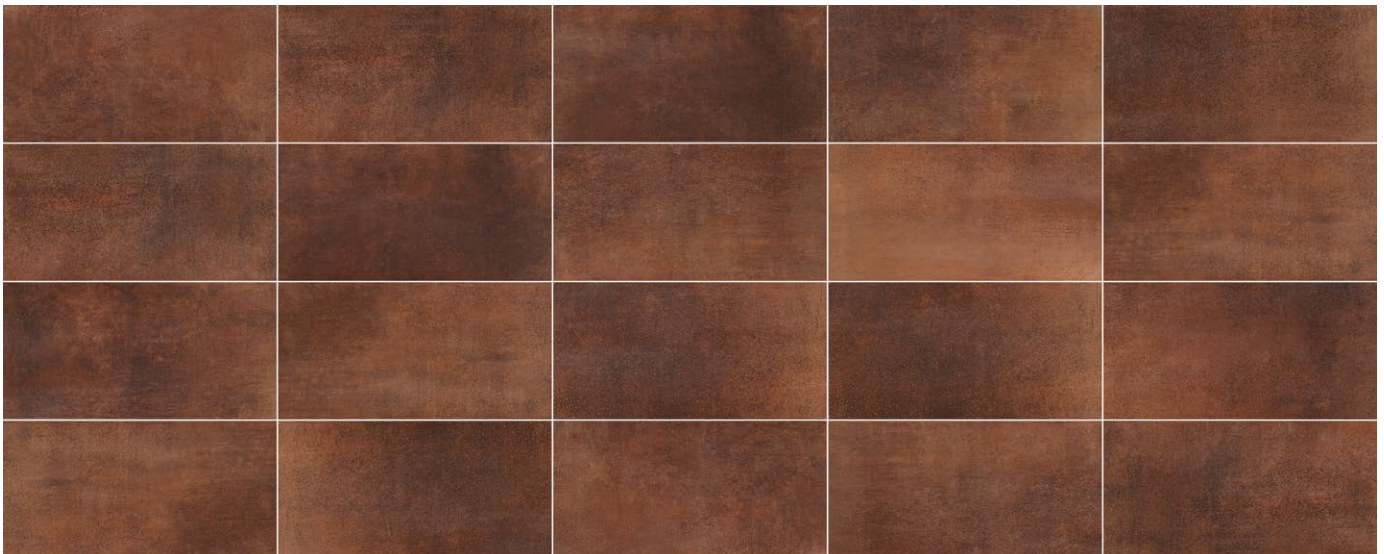




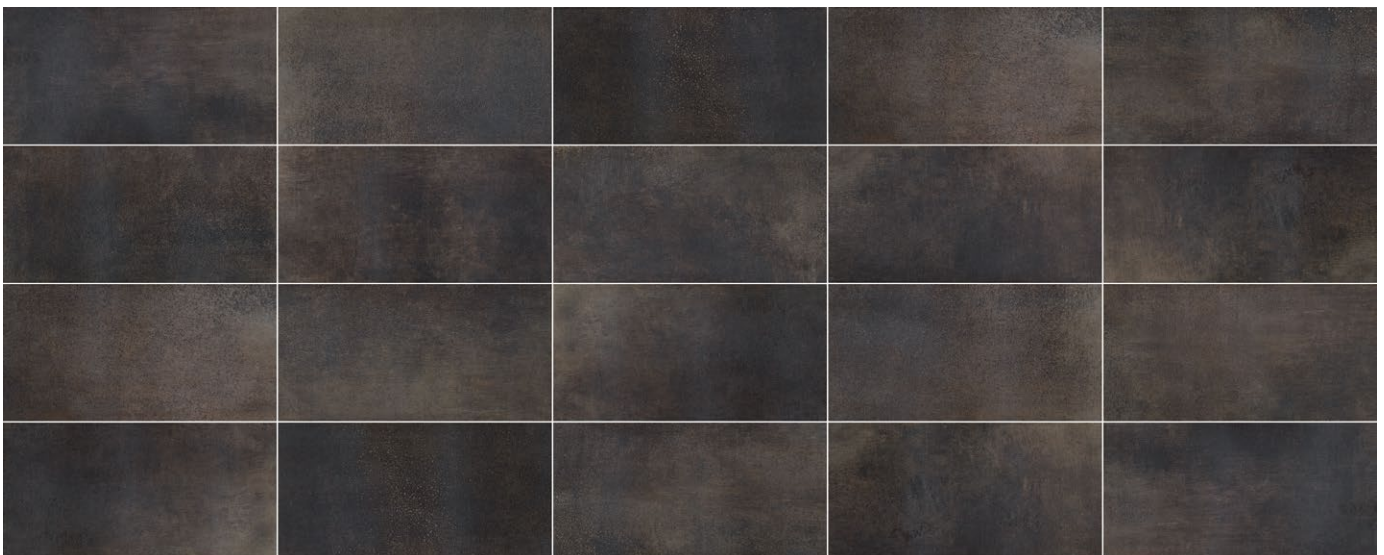
# SHADE VARIATION



34813 Sterling



34895 Copper



34819 Iron





Shown: **34813 12x24** Sterling, **34813/M1x4STK** Sterling Stack Mosaic



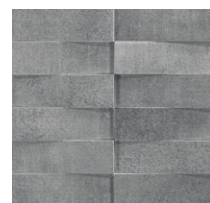
**34813 18x36**  
Sterling



**34813 24x24**  
Sterling



**34813 12x24**  
Sterling



**34813/M3D2x6**  
Sterling 3D Mosaic  
(wall only)



**34813/M1x4STK**  
Sterling Stack Mosaic

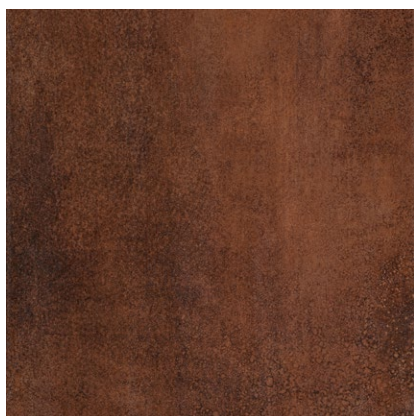




Shown: **34895 24x24** Copper, **34895/M3D2x6** Copper 3D Mosaic (wall only)



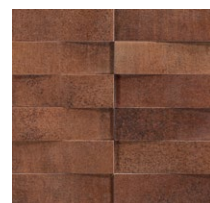
**34895 18x36**  
Copper



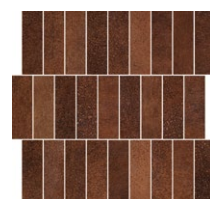
**34895 24x24**  
Copper



**34895 12x24**  
Copper



**34895/M3D2x6**  
Copper 3D Mosaic  
(wall only)



**34895/M1x4STK**  
Copper Stack Mosaic





IRON

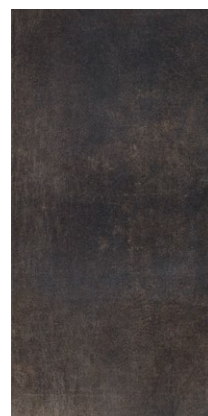
Shown: 34819 18x36 Iron



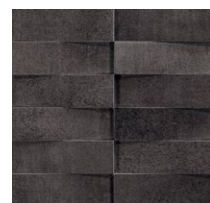
34819 18x36  
Iron



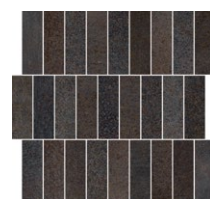
34819 24x24  
Iron



34819 12x24  
Iron

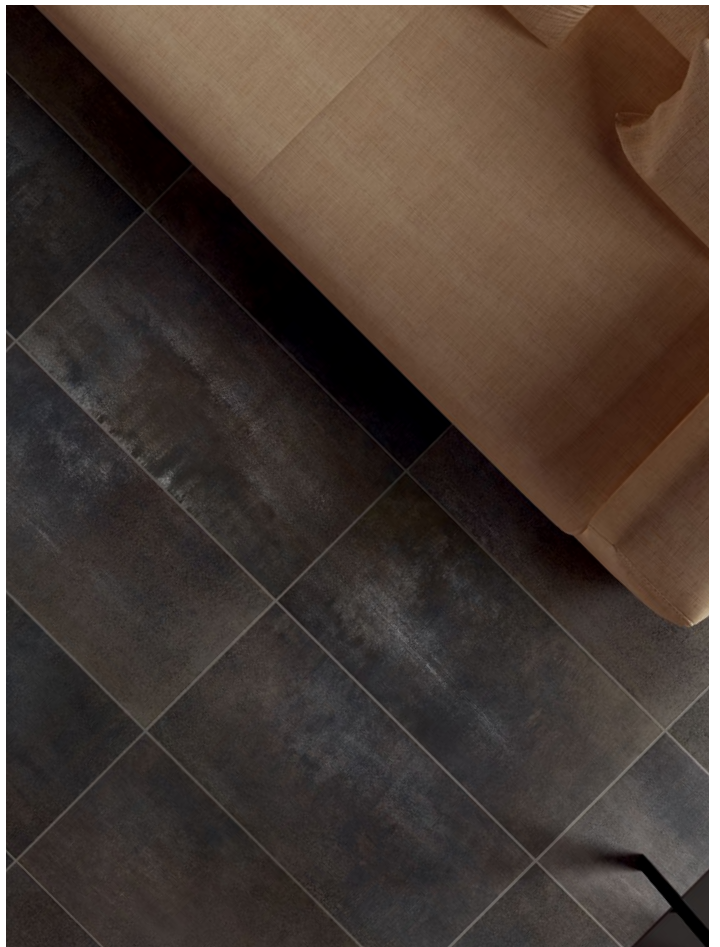


34819/M3D2x6  
Iron 3D Mosaic  
(wall only)



34819/M1x4STK  
Iron Stack Mosaic









Shown: 34813 12x24 Sterling, 34813/M1x4STK Sterling Stack Mosaic

## NEXA HDP<sup>®</sup>

High Definition Porcelain

BY floridatile

### Typical Uses

Nexa<sup>HDP</sup> color body porcelain floor and wall tile is appropriate for all residential and commercial wall, countertop and backsplash applications, all residential and most commercial floor applications.

This collection features patented Microban<sup>®</sup> technology that consists of treating the ceramic material with a formulated antimicrobial additive capable of expressing high antimicrobial efficacy using established international laboratory protocols.

Notice: Not all flooring products are suitable for wet areas, specialized applications or commercial use. Please refer to the American National Standard Specifications for Ceramic Tile (ANSI A137.1) for ceramic, stone and glass installation for specific usage and installation information.

This Florida Tile product will contribute to USGBC LEED points and the ANSI approved NAHB Green Building Points.

Properties (Floor)	ASTM	ANSI	Results <sup>1</sup>
DCOF AcuTest <sup>2</sup>	A137.1	≥0.42	Pass
Visible Abrasion Resistance	C-1027	N/A	N/A
Glaze Hardness	Mohs Scale	N/A	7 Mohs
Break Strength	C-648	250 lbf.	Pass
Water Absorption	C-373	<0.5%	<0.5%

<sup>1</sup> These tests are performed by a 3rd party testing lab using industry standard equipment and techniques. Values are offered in good faith as being accurate and typical of normal production. Due to the natural variation of raw materials and manufacturing processes, the values of the purchased product for any particular installation may vary.


<sup>2</sup> ANSI A137.1 standard, ceramic tiles selected for level interior spaces expected to be walked upon when wet must have a minimum wet DCOF AcuTest value of 0.42.

Field Tile Nominal Size <sup>1</sup>	Metric (cm)	Pcs./Sq Ft <sup>2</sup>	Thickness <sup>3</sup>
18" x 36"	45 x 90	.22	10mm
12" x 24"	30 x 60	.5	10mm
24" x 24"	60 x 60	.25	10mm

<sup>1</sup> These values may vary from lot to lot.

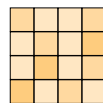
<sup>2</sup> These values are based on actual sizes including the grout joint.

<sup>3</sup> May not apply to textured surfaces or tiles with uneven back patterns.

Trim	Shape	SKU	Nominal Size	Metric (cm)
Bullnose		P43C9	3" x 12"	7.5 x 30

### Color Variations

Color reproductions in this printed piece may vary from actual tile colors. Final selection should be made from actual tile samples.



#### V3 = Moderate Variation

While the colors present on a single piece of tile will be indicative of the colors to be expected on the other tiles, the amount of colors on each piece may vary significantly. For example, "that little bit of color" on one piece of tile may be the primary color on the next piece.



floridatile